

LENS ENGRAVER 4

Created by SIOU

Laser CO₂

Your most personalized lenses with exclusive engravings.

SIOU brings to the optical market the laser engraving machine for ophthalmic lenses, the LENS ENGRAVER. It can mark internal and external surfaces. Available in two versions: automatic and manual.



Benefits

- Low maintenance;
- High reliability;
- High recording quality;
- No consumables required;
- Fully programmable software;
- Development of your own design;
- Manual model compatible with automation;
- Compatible with AutoCAD, .dxf and .dwg files;
- Precision marking on your ophthalmic lenses;
- Lenses with fully personalized markings;
- Power adjustment according to the material (refractive index).

Technical specifications

Output power	220V/6A
Number of phases	Single-phase
Frequency	50/60 Hz
Laser wavelength	10,64mn
Materials	All (except crystal)
Laser	CO₂
Lifespan	45.000 hours
Refrigeration	Air cooled
Temperature min/max	10°C/40°C
Communication	VCA/OMA
Compressed air	4 bar (58 psi)
PC industrial	B&R

Weights and Measures

Laser CO ₂	200kg
Width	500mm
Height	1.200mm
Depth	1.150mm

Automation

Width	1.200mm
Height	1.630mm
Length	2.100mm
Compressed air	6 bar (87 PSI) 75 l/min

LENS ENGRAVER incorporates the production and editing module layout. The system has configurable interfaces in the VCA/OMA standard, TCP/IP or LMS type file.

LENS ENGRAVER ^{At-At} 5 UV

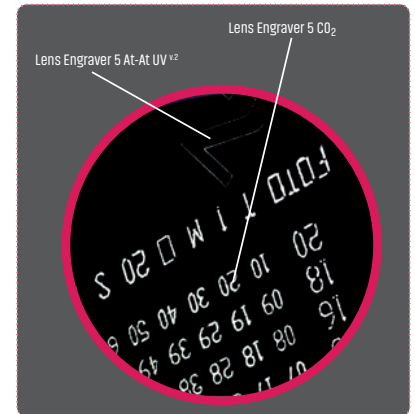
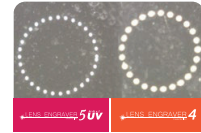
Created by SIOU



Laser AT-AT UV
Highest engraver precision through UV technology.

State-of-the-art ophthalmic lens laser engraving machine, the LENS ENGRAVER AT-AT UV has a more enhanced engraving with micro dots, geometric shapes and complex logos

Comparison



LENS ENGRAVER incorporates the production and editing module layout. The system has configurable interfaces in the VCA/OMA standard, TCP/IP or LMS type file.

Benefits

- Low maintenance;
- Better point resolution;
- 11 times higher than Lens Engraver CO₂
- High reliability;
- High recording quality;
- No consumables required;
- Double the speed compared to Lens Engraver CO₂
- Fully programmable software;
- Development of your own design;
- Manual model compatible with automation;
- Compatible with AutoCAD, .dxf and .dwg files;
- Precision marking on your ophthalmic lenses;
- Lenses with fully personalized markings;
- Power adjustment according to the material (refractive index).

Technical specifications

Output power	220V/10A
Number of phases	Monofásico
Frequency	50/60 Hz
Laser wavelength	355nm
Materials	Todos
Laser	UV
Lifespan	100.000 horas
Refrigeration	Água destilada
Min/max temperature	15°C/25°C
Communication	VCA/OMA
Compressed air	4 bar (58 psi)
PC industrial	B&R
Tweezers	Versions with 1 or 2 tweezers

Weights and Measures

Laser Att UV	230kg
Width	500mm
Chiller	30kg
Height	1.200mm
Depth	1.150mm
Automação	
Width	1.200mm
Height	1.630mm
Length	2.100mm
Compressed air	6 bar (87 PSI) 75 l/min

Comercial/Administrative Department

William Diogo

+55 21 96412-4785

+55 48 99194-2120

william@siou.com.br



Technical Dept.

Geoais Ferreira

geoaisferreira

+55 11 999331-0336

geoais@siou.com.br



Representative (south America)

Carlos Júlio Cobos

+57 31 4427-6097

optiequipos@hotmail.com

optiequipos@gmail.com



STAY FOR
INSIDE THE
NEWS.

facebook/SiouOpto

www.siou.com.br

instagram/Siou.opto